

TRIO FOR DUO

For Live and Taped Alto Flute and Voice

Recordings: XI 107 and Die Schachtel Zeit C13

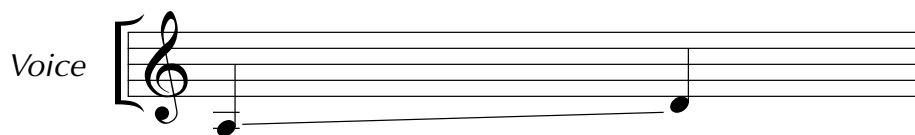
Duration: circa 10 minutes



MARY JANE LEACH

Ariadne Press 85004

Vocal range:



Trio for Duo is for four voices : two alto flutes and two women's voices. Concert performance is with a 2-track recording of one alto flute and one voice - each part coming out of separate speakers. The live parts are amplified, coming from two additional speakers. The singer should try to match the sound of the alto flute. The singer's part should be sung a perfect fourth lower. I notated it that way, since the flute's part will sound a perfect fourth lower, and I thought it would be easier to perform, to see the pitch relationships, since it can be disorienting when singing a lot of glissandos. This way the singer can check the score to see what the other parts are playing, to see the target pitches.

Speaker #1
Taped flute

Speaker #2
Taped voice

Audience

Speaker #4
Live voice

Speaker #3
Live flute

Each part "passes" its note on to another part, moving the note through the space. The timbres of the two instruments are similar in the register that this piece is written in, and it is interesting to hear them match in sound and blend, and then pull away and become separate again.

It is important that this piece be performed in a resonant room, so that the resultant tones and harmonics can be heard and reinforced.

All parts sound perfect 4th lower

Trio for Duo

Mary Jane Leach
(1985)

$\bullet = 60$

5 10 15

Live Alto
Flute

Live Voice

Taped Alto
Flute

Taped Voice

||

20 25

LF

LV

TF

TV

30 35 40

LF

LV

TF

TV



45 50

LF

LV

TF

TV

55 60 65

LF

LV

TF

TV

This system of music contains measures 55 through 65. It features four staves: LF (Left Flute), LV (Left Violin), TF (Trumpet), and TV (Trumpet/Voice). The music is written in treble clef with a key signature of one flat. Measures 55-60 show a melodic line in the LF part with rests in the other parts. Measures 61-65 show a more active texture with various instruments playing.



70 75

LF

LV

TF

TV

This system of music contains measures 70 through 75. It features the same four staves as the previous system. Measures 70-75 show a continuation of the musical themes, with some instruments playing sustained notes and others moving more actively.

80 85 90

LF

LV

TF

TV

This system of music covers measures 80 to 90. It features four staves: LF (Left Flute), LV (Left Violin), TF (Trumpet), and TV (Trumpet). The music is written in treble clef with a key signature of one flat. The LF part begins with a melodic line of eighth notes, while the other parts provide harmonic support with sustained notes and rests. Measure numbers 80, 85, and 90 are indicated above the LF staff.



95 100

LF

LV

TF

TV

This system of music covers measures 95 to 100. It features the same four staves: LF, LV, TF, and TV. The LF part continues with a melodic line, while the other parts maintain their harmonic roles. Measure numbers 95 and 100 are indicated above the LF staff.

105 110 115

LF

LV

TF

TV

This system of music contains measures 105 through 115. It features four staves: LF (Left Flute), LV (Left Violin), TF (Trumpet), and TV (Trumpet). The music is written in treble clef with a key signature of one flat. The LF part has a melodic line with some trills and rests. The LV part has a similar melodic line. The TF and TV parts provide harmonic support with sustained notes and some trills. Measure numbers 105, 110, and 115 are indicated above the LF staff.



120 125

LF

LV

TF

TV

This system of music contains measures 120 through 125. It features the same four staves: LF, LV, TF, and TV. The music continues with similar melodic and harmonic patterns. Measure numbers 120 and 125 are indicated above the LF staff.

130 135 140

LF

LV

TF

TV

This system of music contains measures 130 through 140. It features four staves: LF (Left Flute), LV (Left Violin), TF (Trumpet), and TV (Trumpet). The music is written in treble clef. Measures 130 and 135 are marked with a '130' and '135' respectively above the first staff. The notation includes various note values, rests, and slurs across all staves.



145 150

LF

LV

TF

TV

This system of music contains measures 145 through 150. It features four staves: LF (Left Flute), LV (Left Violin), TF (Trumpet), and TV (Trumpet). The music is written in treble clef. Measures 145 and 150 are marked with a '145' and '150' respectively above the first staff. The notation includes various note values, rests, and slurs across all staves.